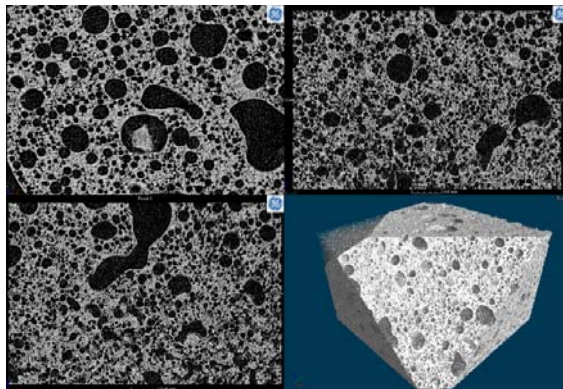
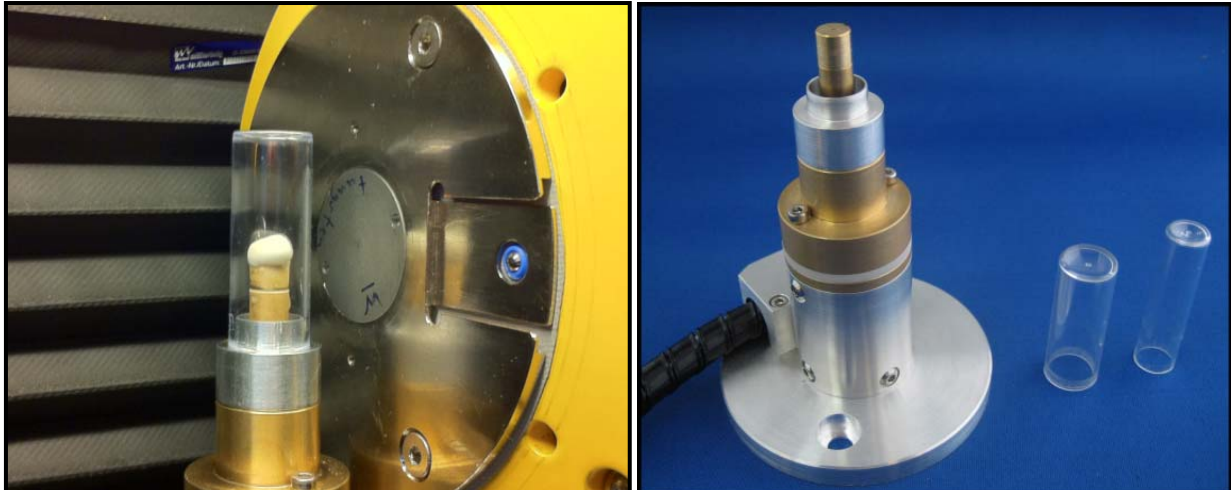
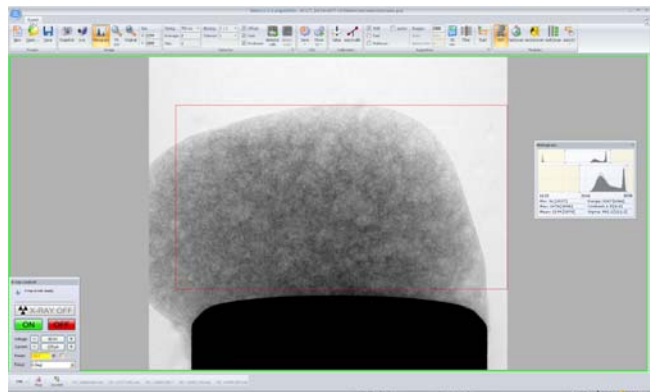


Peltier stage for use with CT Tomography systems

The Deben peltier stage for CT tomography systems allows samples to be imaged in a frozen condition, a dual layer polystyrene window prevents icing and allows samples to be rapidly cooled to -20°C. A variable height specimen holder allows samples to be placed at the optimum height for X-Ray imaging and mounting adaptors are available for a range of CT stages. The cooling system is self contained and does not require an additional water chiller, pipes are flexible and easily allow 360° rotation.



ice cream 3D reconstruction



ice cream 2D image

SPECIFICATIONS

- temperature range -20°C to +50°C at ambient temperature of 20°C
- temperature accuracy +/- 1.5°C or 2% (whichever is greater)
- temperature display resolution 0.1°C, temperature stability +/-0.2°C
- peltier cooled specimen holder (10mm diameter) with dual polystyrene cover to prevent icing
- height of specimen holder base can be set with different length holders as required for particular stage
- cooling head mounting to suit CT stage as required
- 2.5M flexible pipes and cables to allow easy mounting
- maximum cooling/heating rate 20°C per minute
- self contained re-circulating water chiller with peltier cooling
- keypad/display for temperature display and control and simultaneous display of actual and target temperature
- microprocessor controlled with RS-232 software control from computer including cable
- operating voltage 110-115V or 220-240V
- warranty period: 1 year including parts and labour
- installation and operation instructions supplied with system